

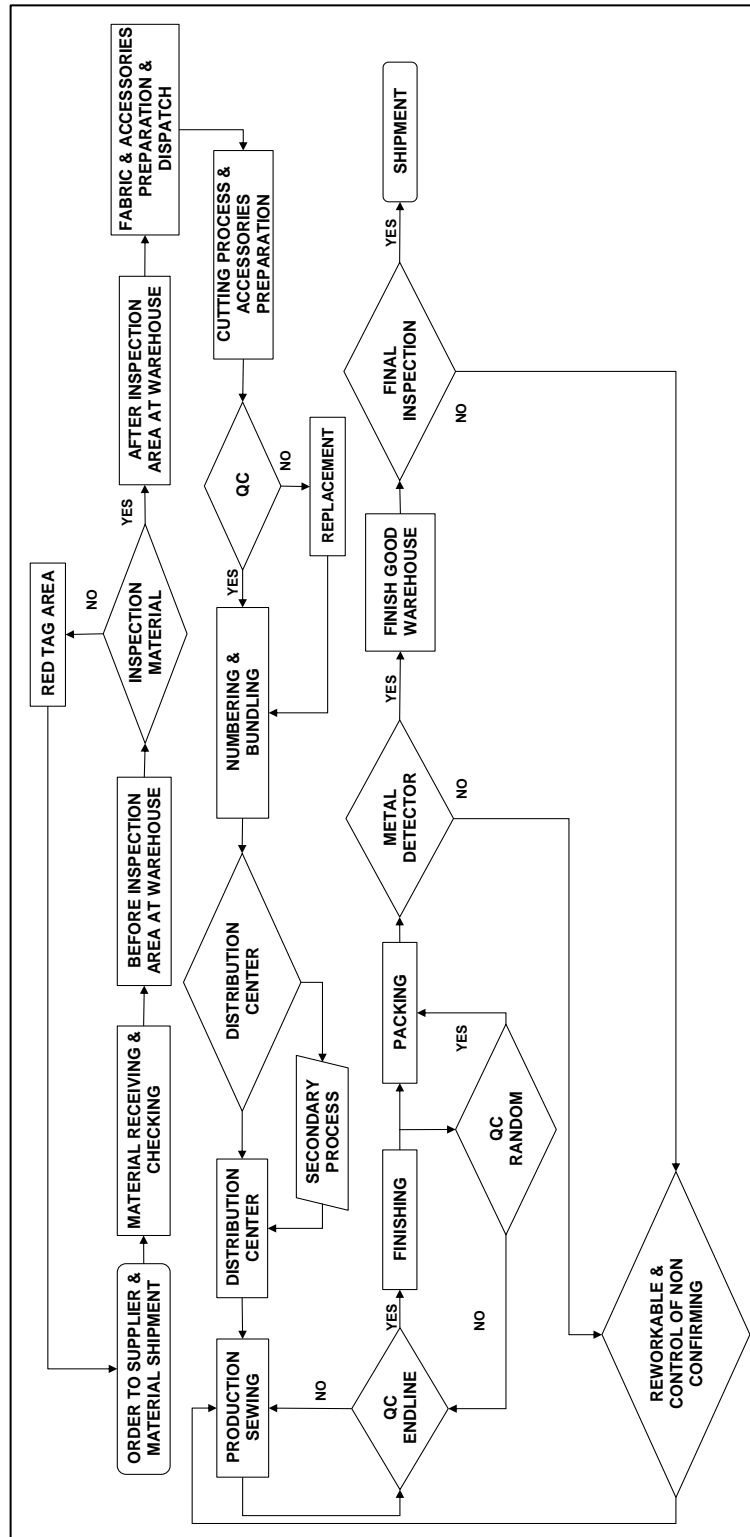
DAFTAR PUSTAKA

- Akademi Komunitas Tekstil dan Produk Tekstil Surakarta. (2022). *Buku Pedoman Praktik Kerja Lapangan*. Surakarta: Akademi Komunitas Tekstil dan Produk Tekstil Surakarta.
- Anis, Muchlison, dkk. 2007: Optimasi Perencanaan Produksi Dengan Metode Goal Programming. 133-135.
- Gaspersz, V., & Fontana, A. (2011). *Lean six sigma for manufacturing and service industries : waste elimination and continuous cost reduction*. Edisi Revisi. Bogor: Vinchristo Publication.
- HRM, Departemen. (2023). Distribusi Karyawan PT PS2. Boyolali: PT PS2.
- HRM, Departemen. (2023). Jam Kerja PT PS2. Boyolali: PT PS2.
- HRM, Departemen. (2023). Jumlah Tingkat Pendidikan PT PS2. Boyolali: PT PS2.
- HRM, Departemen. (2023). Struktur Organisasi PT PS2. Boyolali: PT PS2.
- HRM, Departemen. (2023). Struktur Organisasi PT PS2. Boyolali: PT PS2.
- IDN Financials. (2023, Maret 31). *Daftar Afiliasi Anak Perusahaan PT PB*. <https://www.idnfinancials.com/id/pbrx/pt-pan-brothers-tbk>
- IDN Financials. (2023, Maret 31). *Daftar Pemegang Saham*. Retrieved from <https://www.idnfinancials.com/>: <https://www.idnfinancials.com/id/pbrx/pt-pan-brothers-tbk>
- IE, D. (2023). Jumlah Kebutuhan Mesin Style TX23. Boyolali: PT PS2.
- IE, D. (2023). Layout Mesin Style TX23. Boyolali: PT PS2.
- IE, D. (2023). Line Balancing Worksheet 1 style TX23. Boyolali: PT PS2.
- IE, D. (2023). Line Balancing Worksheet 2 style TX23. Boyolali: PT PS2.
- IE, D. (2023). Line Balancing Worksheet 3 style TX23. Boyolali: PT PS2.
- IE, D. (2023). *Monitoring Board Line Sewing*. Boyolali: PT PS2.
- IE, D. (2023). Operation Breakdown Process Style TX23. Boyolali: PT PS2.
- IE, D. (2023). Operation Process Chart Style TX23. Boyolali: PT PS2
- Ikayanti, Hanik. (2004): Analisis Akar Masalah (*Root Cause Analysis*). [file:///C:/Users/hp/Downloads/4359-8490-1-SM%20\(5\).pdf](file:///C:/Users/hp/Downloads/4359-8490-1-SM%20(5).pdf). Diakses pada 26 Juli 2023
- Ivancevich John M.– Matteson (2008): “Organizational Behavior and Management”, Sixth Edition, McGraw-Hill Irwin, New York.
- Mekanik, D. (2023). Checklist Perawatan Mesin. Boyolali: PT PS2
- Mekanik, D. (2023). Jenis Mesin, Kendala, dan Cara Mengatasi. Boyolali: PT PS2.
- Moleong, L.J. 2016. Metodologi Penelitian Kualitatif. Jakarta: Rosdakarya.

- PT PB. (2023, Juni 1). *Company Profile PT PB*. Retrieved from <https://www.panbrotherstbk.com/>: *Publishing Company*. Texas: A&M University. Retrieved from <https://www.idnfinancials.com/>:
- Robbins, S dan Coulter, M. (2007). *Manajemen*. Edisi Kedelapan. Jakarta: PT Indeks.
- Sudaryono. (2016). *Manajemen Pemasaran Teori dan Implementasi*. Yogyakarta: ANDI.
- Sugiyono. (2012). *Metode Penelitian Pendidikan Pendekatan Kuantitatif, Kualitatif, dan R&D*. Bandung: Alfabeta.
- Sugiyono. (2017). *Metode Penelitian Kuantitatif, Kualitatif, dan R&D*. Bandung : Alfabeta, CV.
- Umar, H. (2003). *Riset Pemasaran dan Perilaku Konsumen*. Jakarta: Gramedia Pustaka Utama.
- Undang-Undang (UU) Nomor 13 Tahun 2003 tentang Ketenagakerjaan. Sekretariat Negara, Jakarta.
- Warehouse, D. (2023). *Penilaian poin defect metode four point system*. Boyolali: PT PS2
- Wijaya, A. (2020): *Manajemen Operasi Produksi*. Medan: Yayasan Kita Menulis.

LAMPIRAN

Lampiran 1 Flow process chart produksi PT PS2



Sumber: HRD PT PS2

Lampiran 2 Operation breakdown process style TX23

PART	PROCESS DESCRIPTION	MACHINE
FRONT BODY (JACKET)	MRKG FR BODY WITH SIDE PKT	NMC
FRONT BODY (JACKET)	JOIN INTERLINING TO WELT POCKET	SNL
FRONT BODY (JACKET)	TACK ZIP TO POCKET POSITION 2CM	SNL
FRONT BODY (JACKET)	CUT BREAK OPEN PKT W FC (HOLE POCKET)	NMC
FRONT BODY (JACKET)	ATT ZIP TO PKT (NO FACING) 20 CM	SNL
FRONT BODY (JACKET)	JOIN FACING TO PALM/KNUCKLE 25 CM (COATING) X2	OM5
FRONT BODY (JACKET)	STITCH FC PALM/KNUCKLE STRGHT 25CM	SNL
FRONT BODY (JACKET)	JOIN KNUCKLE TO ZIP HAND PKT 20CM	SNL
FRONT BODY (JACKET)	JOIN PALM TO ZIP HAND PKT 20CM	SNL
FRONT BODY (JACKET)	STCH WELT PKT ZIP KNUCKLE 19 CM (1 WELT + ZIP) WITH TACKING	SNL
FRONT BODY (JACKET)	STCH ZIP POCKET PALM 21 CM(1 WELT + ZIP) WITH TACKING	SNL
FRONT BODY (JACKET)	TACK INSIDE POCKET 12 CM	SNL
FRONT BODY (JACKET)	JOIN LAYER SIDE POCKET 60 CM	OM5
FRONT BODY (JACKET)	BARTACK ZIPPER POCKET	BTK
FRONT BODY (JACKET)	JN INSIDE WELT TO ZIP SIDE PKT STRGHT BFR JOIN SIDE PANEL	SNL
FRONT BODY (JACKET)	JN SIDE PNL TO FBY W WELT PKT 40 CM (COATING)	SNL
FRONT BODY (JACKET)	BARTACK SIDE POCKET	BTK
FRONT BODY (JACKET)	TACK POCKET TO FR BODY NO LINING X2	SNL
FRONT BODY (JACKET)	CUT ALLOWANCE SIDE PANEL + WELT POCKET	SNC
FRONT BODY (JACKET)	SEAM SEAL FRONT BODY W 4 POCKETS	SSM
FRONT BODY (JACKET)	HAND PRESS FRONT BODY W POCKET (COST)	HNP
FRONT BODY (JACKET)	ATT BEMISH LAYER INNER POCKET	HNP
FRONT BODY (JACKET)	ATT LAYER INNER POCKET	STM
FRONT BODY (JACKET)	HAND PRESS LAYER INNER POCKET	HNP
FRONT BODY (JACKET)	JOIN BACKING PANEL TO INNER SIDE SEAM	SNL
FRONT BODY (JACKET)	SEAM SEAL LAYER INNER FBY	SSM
FRONT BODY (JACKET)	HAND PRESS LAYER FBY	HNP
HOOD	MRKG SIDE HOD NRML W EYELET	NMC
HOOD	JOIN SIDE TO MID SKI HOOD 52 CM	SNC
HOOD	SEAM SEAL HOOD NO TUNNEL	SSM
HOOD	HAND PRESS HOOD NO TUNNEL	HNP
HOOD	JOIN FACING UPPER HOOD CRV NO LINING 65 CM	SNL
HOOD	STCH 1/16 FC UP HOOD CRV 80 CM	SNL
HOOD	ATTACH EYELET TO HOOD 2X	SNP

Lampiran 2 Operation breakdown process style TX23 (lanjutan)

PART	PROCESS DESCRIPTION	MACHINE
STORMFLAP	JOIN LYR STROMFLAP W INTERLINING	SNL
STORMFLAP	JOIN INTERLIN STROMFLAP SQUARE SNC 80 CM	SNL
STORMFLAP	STICH EDGE STROMFLAP SQUARE 60 C (INCLUDE TURN OUT)	SNL
STORMFLAP	STITCH FOLD RAIN GAITOR	SNL
STORMFLAP	JOIN CLOSE STROMFLAP WOVEN 70 CM	SNL
STORMFLAP	CUTT/ALLOWANCE PADD STROMFLAP	SNC
STORMFLAP	ATT FRONT ZIP TO STROMFLAP NORMAL 70 CM	SNL
ASSEMBLY	JOIN SHOUDER NORMAL 15 CM	SNC
ASSEMBLY	STITCH SHOULDER 30 CM	SNL
ASSEMBLY	SEAM SEAL SHOULDER	SSM
ASSEMBLY	HAND PRESS SHOULDER	HNP
ASSEMBLY	JOIN SLEEVE NORMAL, MATCH POIN 2X CUTTER	SNC
ASSEMBLY	SEAM SEAL SHOULDER	SSM
ASSEMBLY	HAND PRESS ARMHOLE NO LINING	HNP
ASSEMBLY	JOIN SIDE SEAM NORMAL MATCH POINT	SNC
ASSEMBLY	SEAM SEAL SIDESEAM NORMAL	SSM
ASSEMBLY	HAND PRESS SIDESEAM NORMAL	HNP
ASSEMBLY	TACK ELASTIC CUFF CLEAN FINISH 12 CM	SNL
ASSEMBLY	HEM CUFF FULL ELASTIC CLN FINISH NO TACK 28 CM	SNL
ASSEMBLY	JOIN COLLAR (1 LAYER) 60 CM	SNC
ASSEMBLY	SEAM SEAL NECKINWITH TAPE 3X (W LINING)	SSM
ASSEMBLY	HAND PRESS NECKILINE	HNP
ASSEMBLY	AFTER ZIP MATCH COLLAR WB + PKT I40 CM	SNL/DNL
ASSEMBLY	STITCH CLOSE PADD W QUILT + CUT SEPARATE FBY	SNC
ASSEMBLY	JOIN FRONT FC TO ZIPPER FOR SEAM SEAL 65 CM	SNL
ASSEMBLY	STITCH 1/16 INSIDE FRONT ZIPPER COATING 70 CM (PROD)	SNC
ASSEMBLY	ATT BEMISH FRONT ZIPPER	SSM
ASSEMBLY	OVERLAPE BEMISH FRONT ZIPPER	UTW
ASSEMBLY	PRESS FRONT ZIPPER	HNP
ASSEMBLY	SEAM SEAL INSIDE CENTER FR ZIPPER X2	SSM
ASSEMBLY	HAND PRESS FRONT ZIPPER	HNP
ASSEMBLY	JOIN FC TO HEM (STRAIGHT)110 CM	SNL
ASSEMBLY	STITCH FACING HEM STRAIGHT ROUNDED 110 CM	SNL
ASSEMBLY	TACK END OFF HEM 3 CM	SNL
ASSEMBLY	ATT EYELET FC HEM 2X (INCLUDE MARKING + CUT HOLE)	SNP
ASSEMBLY	INSERT DRAWCORD HEM WITH LOOP + STOPPER	NMC
ASSEMBLY	TACK DRACORD HEM 4 CM	SNL
ASSEMBLY	BARTACK INSIDE DRAWCORD BTM HEM	BTK
ASSEMBLY	HEMMING NO LIN+CORD CRV 110 CM	SNL

Lampiran 2 *Operation breakdown process style TX23 (lanjutan)*

ASSEMBLY	TACK END OFF HEMMING HOOD	SNL
ASSEMBLY	INSERT DRAWCORD TO HOOD	NMC
ASSEMBLY	TACK DRAWCORD TO HOOD	SNL
ASSEMBLY	BARTACK INSIDE DRAWCORD HOOD	BTK
ASSEMBLY	HEM HOOD CURVED ASS 80 CM	SNL
ASSEMBLY	BARTACK FRONT ZIPPER X4	BTK
ASSEMBLY	ATT CARE LABEL TO SEAL TAPE LABEL	SNL
ASSEMBLY	STITCH CARE LABEL LINING 4 CM	SNL
ASSEMBLY	HAND PRESS SEAL TAPE CARE LABLE	HNP

Sumber: *Industrial Engineering PT PS2*

