

DAFTAR PUSTAKA

- Anonim, (2019). *Buku Pedoman Praktik Kerja Lapangan Akademi Komunitas Industri Tekstil dan Produk Tekstil Surakarta*. Kementerian Perindustrian, Surakarta.
- Anonim, (2017). *Company*, <https://www.duniatex.com/id/company.html>, diakses tanggal 25 Agustus 2019.
- Arif,S. (1999). *Sistem Pengendalian Manajemen*, BPFE Yogyakarta, Yogyakarta, hlm. 6-7.
- Dsnie, D. (2013). *Persiapan Pertenunan*, dari
https://www.academia.edu/18876594/PERSIAPAN_PERTENUNAN, Diakses Agustus Kamis, 2019.
- Hendra. (2017). *Teknologi Persiapan Pertenunan*. Bandung.
- Indiyanto, R. (2008). *Perencanaan dan Pengendalian Produksi*. Yayasan Humaniora.Surabaya
- Juwairiah, J. (2017). *Study Kasus Pengendalian Mutu*, dari
[https://www.academia.edu/7293514/STUDY_KASUS_PENGENDALIAN_MU TU](https://www.academia.edu/7293514/STUDY_KASUS_PENGENDALIAN_MU_TU), Diakses september 1, 2019.
- Sastrosumarto, S. (2018). *Sebuah Penelitian Tentang Warping & Sizing Break*. Surakarta.
- Sulam, A. L. (2008). *Teknik Pembuatan Benang dan Pembuatan Kain Jilid 2*. Direktorat Pembinaan Sekolah Menengah Kejuruan.Jakarta

LAMPIRAN



Sumber : *Maintanance Preventive* Blok C.PT. DMDT V, 2020

Lampiran 1 Kerapatan *sub nozzle*



Sumber : *Maintanance Preventive* Blok C.PT. DMDT V, 2020

Lampiran 2 *Regulator Preasurre Angin*



Sumber : *Maintanance Preventive* Blok C.PT. DMDT V, 2020

Lampiran 3 Sub Nozzle Gauge



Sumber : *Maintanance Preventive* Blok C.PT. DMDT V, 2020

Lampiran 4 *Flunger* Rusak



Sumber : *Maintanance Preventive* Blok C.PT. DMDT V, 2020

Lampiran 5 Lubang *Sub Valve* Rusak



Sumber : *Maintanance Preventive* Blok C.PT. DMDT V, 2020

Lampiran 6 Lubang Nozzle Aus/Rusak



Sumber : *Inspecting* Blok C.PT. DMDT V, 2020

Lampiran 7 Cacat Kain *Salur* Pinggiran

FABRIC INSPECTION RECORD

MICO A 3 08 R Pico 201
 2/6/20 SC 28 21 17

NO. NO. LKOP 286 AK09
 NO. BAKAR 2035
 TETAP LUB (M) 2 64
 TETAP BAKAR (M) 498 450
 JANGKAWAN

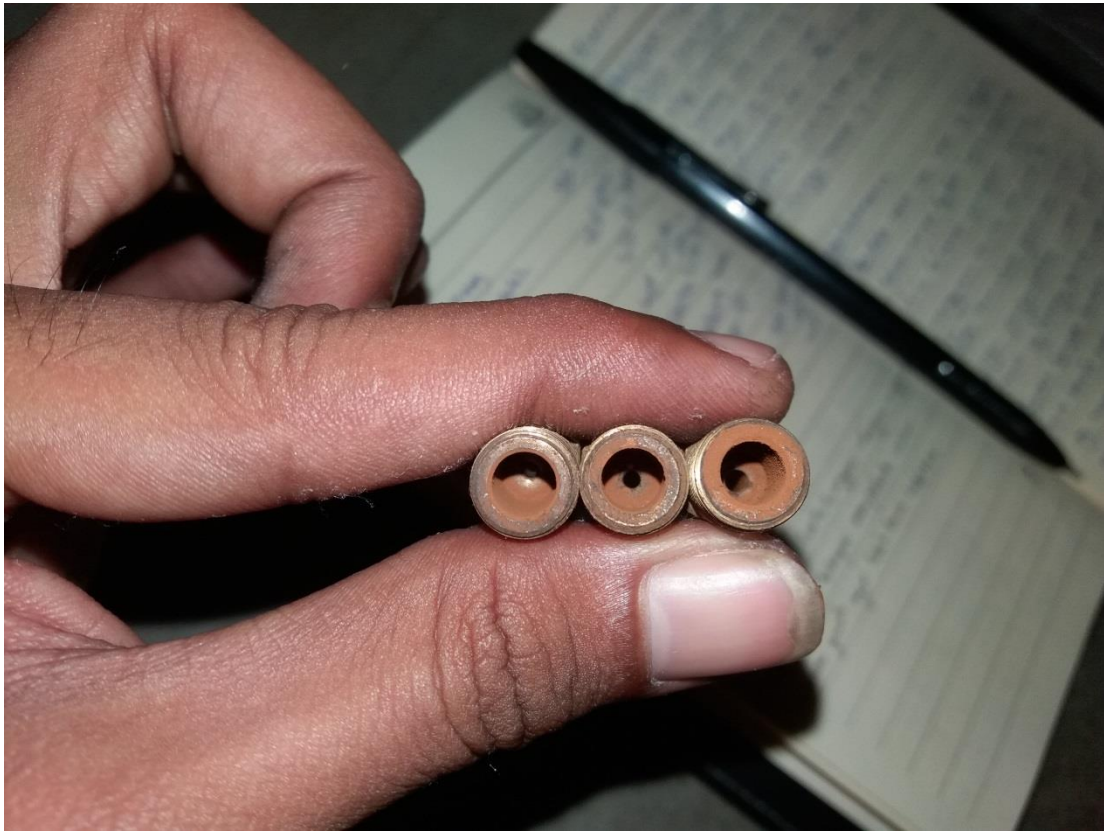
DEFECT ALL GRADE TENUN DEFECT PERGRADE

TENUN				DEFECT PERGRADE				TENUN				DEFECT PERGRADE								
MTR	SHIFT	DP	LTB	EP	LTB	LTP	SMB	MTR	SHIFT	DP	LTB	LTP	SMB	MTR	SHIFT	DP	LTB	LTP	SMB	
10								10						10						
15								15						15						
20								20						20						
25								25						25						
30								30						30						
35								35						35						
40								40						40						
45								45						45						
50								50						50						
55								55						55						
60								60						60						
65								65						65						
70								70						70						
75								75						75						
80								80						80						
85								85						85						
90								90						90						
95								95						95						
100								100						100						
105								105						105						
110								110						110						
115								115						115						
120								120						120						
125								125						125						
130								130						130						
135								135						135						
140								140						140						
145								145						145						
150								150						150						
155								155						155						
160								160						160						
165								165						165						
170								170						170						
175								175						175						
180								180						180						
185								185						185						
190								190						190						
195								195						195						
200								200						200						
205								205						205						
210								210						210						
215								215						215						
220								220						220						
225								225						225						
230								230						230						
235								235						235						
240								240						240						
245								245						245						
250								250						250						
255								255						255						
260								260						260						
265								265						265						
270								270						270						
275								275						275						
280								280						280						
285								285						285						
290								290						290						
295								295						295						
300								300						300						

Handwritten notes on the table include: "P. Salur", "V.B. Finan", "20/288", "0.06", and "K".

Sumber : *Inspecting* Blok C.PT. DMDT V, 2020

Lampiran 8 Data *Inspecting* Cacat kain Salur



Sumber : *Maintanance Preventive* Blok C.PT. DMDT V, 2020

Lampiran 9 Lubang Nozzle Angin Yang Bermasalah

TENUN					INSPECT (PERBAIKAN)					
MTR	SHIFT	DP	LTB	LTP	SMG	MTR	DP	LTB	LTP	SMG
5						5				
10						10				
15						15				
20						20				
25						25				
30						30				
35						35				
40						40				
45						45				
50						50				
55						55				
60						60				
65						65				
70						70				
75						75				
80						80				
85						85				
90						90				
95						95				
100						100				
105						105				
110						110				
115						115				
120						120				
125						125				
130						130				
135						135				
140						140				
145						145				
150						150				
155						155				
160						160				
165						165				
170						170				
175						175				
180						180				

Handwritten notes on the table:

- A circle containing the letters "FF" is drawn around the rows for MTR 50 and 55.
- A downward-pointing arrow is drawn between the rows for MTR 55 and 60.
- The text "p. Salur" is written across the rows for MTR 70, 75, and 80.
- The text "fms" is written across the rows for MTR 110 and 115.

Sumber : Data *Inspecting* Blok C.PT. DMDT V, 2020

Lampiran 10 Data Cacat Kain Salur Di *Inspecting*

