

## DAFTAR PUSTAKA

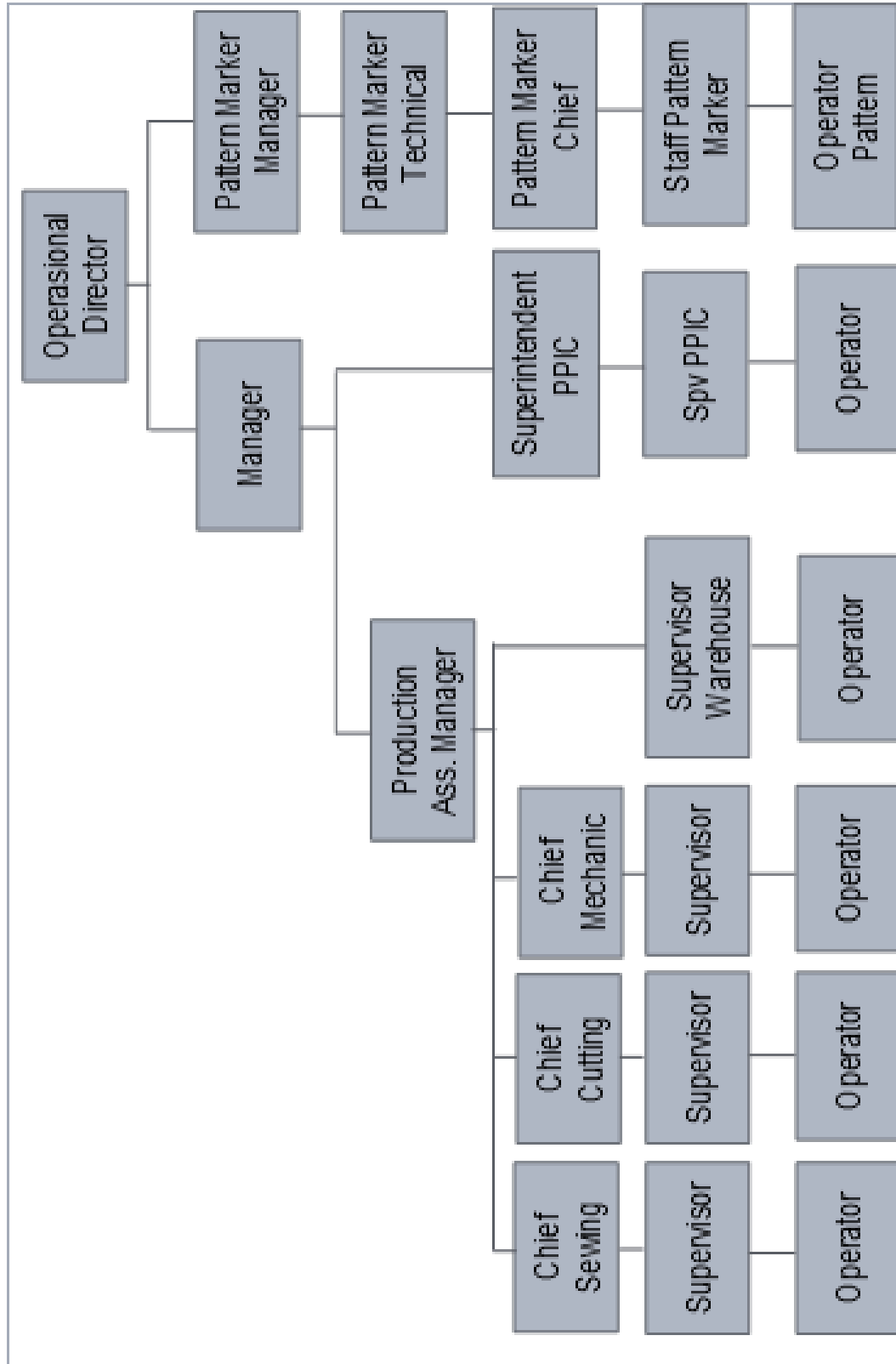
- Anis, d. (2007). *Definisi Perencanaan Produksi*. From <http://eprints.umg.ac.id/3038/3/BAB%202.pdf>, diakses tanggal 20 Mei 2022.
- Anonim. (2022). *Company Profile*. Boyolali: PBRX. Diakses Februari 2022.
- Anonim. (2022). *Jumlah Tenaga Kerja*. Boyolali: HRD Sample Room. Diakses tanggal 19 Juni 2022.
- Anonim. (2022). *Profile Pan Brothers Tbk*. From <https://www.panbrotherstbk.com/>, diakses tanggal 19 Juni 2022
- Baruto. (2002). *Definisi Bahan Baku*. From <http://repository.unim.ac.id/178/2/BAB%202.pdf>, diakses tanggal 20 Mei 2022
- F.D, S. (2008). From Dunia Pengertian: <https://www.duniapengertian.com/2014/02/seputar-pengertian-pemeliharaan.html>, diakses tanggal 20 Mei 2022
- Gitosudarma, R. &. (2000). *Pengertian Pengendalian Mutu*. From <http://library.binus.ac.id/eColls/eThesisdoc/Bab2/2009-1-00305-MN%20Bab%202.pdf>, diakses tanggal 20 Mei 2022
- Hatta, D. M. (1994). *Pengertian Produksi*. From <https://dewey.petra.ac.id/repository/jiunkpe/jiunkpe/s1/eman/1999/jiunkpe-ns-s1-1999-31493355-13432-kontribusi-chapter2.pdf>, diakses tanggal 20 Mei 2022
- IDN. (2022). *Saham PBRX*. From IDN f: <https://www.idnfinancials.com/id/pbrx/PT%20pan-brothers-tbk>, diakses tanggal 20 Mei 2022
- Indonesia, R. (2003). *Undang-Undang No 13 Tentang Ketenagakerjaan*. Undang-Undang Dasar Republik Indonesia. Diakses tanggal 19 Juni 2022
- Jatmiko, A. (2017). *Perawatan dan Pemeliharaan Mesin Garmen*. Solo: Solo Techno Park. Diakses Februari 2022.
- Lu, K. I. (2006). *Pengertian Pengendalian Produksi*. From <http://repository.unpas.ac.id/41753/3/BAB%20II%20ega.pdf>, diakses tanggal 20 Mei 2022
- Mujiyono. (2015). *Pengetahuan Barang dan Manufaktur Tekstil*. Jakarta: Kementerian Perindustrian Republik Indonesia. Diakses tanggal 12 Juli 2022.
- Munawir. (2014). *Pengertian Modal*. From <http://eprints.umm.ac.id/59624/3/BAB%20II.pdf>, diakses tanggal 19 Juni 2022
- Nasution. (1999). *Pengertian Perencanaan Produksi*. From Dunia Pengertian: <https://www.duniapengertian.com/2019/07/pengertian-perencanaan-produksi-jenis-fungsi-tujuan.html?m=1>, diakses tanggal 20 Mei 2022
- Render, H. &. (2011). *Pengertian Produksi*. From <http://repository.unpas.ac.id/41753/3/BAB%20II%20ega.pdf>, diakses tanggal 20 Mei 2022

Stanton. (2013). *Pengertian Pemasaran*. From <http://repository.stp-bandung.ac.id/bitstream/handle>, diakses tanggal 19 Juni 2022

Susanto, A. (2013). *Pengertian Struktur Organisasi*. Retrieved from <https://elibrary.unikom.ac.id>, diakses tanggal 20 Mei 2022

## LAMPIRAN

Lampiran 1 Stuktur Organisasi *Sample Room*



Lampiran 2 Operational Process Chart Style Hooded Jacket

Part	Process Code	PROCESS DESCRIPTION	M/C	GSD REF CODE
FRONT BODY (JACKET)	A1	JOIN PADDING TO LOWER FRONT BODY	SNC	HOJ011
FRONT BODY (JACKET)	A2	JOIN EDGE TO SIDE PNL LOWER FRONT	SNC	HOJ007
FRONT BODY (JACKET)	A3	ATT SHMP TO FLAP PRT 4X (INCLUDE MARKS)	SNP	FLA003
FRONT BODY (JACKET)	A4	JOIN PADDING WELT POCKET	SNL	FLJ014
FRONT BODY (JACKET)	A5	JOIN PADDING TO WELT PRT 2X	SNL	POJ003
FRONT BODY (JACKET)	A6	CUT BREAK OPEN PRT BY WELT	NMC	POC000
FRONT BODY (JACKET)	A7	STRETCH PALM PAUCULE STRAIGHT 20CM	SNL	POS015
FRONT BODY (JACKET)	A8	JOIN WELT TO PAUCULE PALM 1A CM	SNL	POA003
FRONT BODY (JACKET)	A9	JOIN PAUCULE 1 WELT TO FRONT BODY 15 CM (MIRROR POSE)	SNL	POJ004
FRONT BODY (JACKET)	B10	STITCH THE PAUCULE 15 CM	SNL	POS002
FRONT BODY (JACKET)	B11	TACK WEDGE POCKET 12 CM	SNL	POJ003
FRONT BODY (JACKET)	B12	JOIN LAYER POCKET SQUARE	OMS	POJ010
FRONT BODY (JACKET)	B13	TACK PNL TO SIDE POCKET 12 CM	SNL	POJ001
FRONT BODY (JACKET)	A14	TACK PNL TO SIDE POCKET FROM JOIN SIDE PNL	SNL	POJ001
FRONT BODY (JACKET)	B15	ATT SHMP TO PRT 1A 2X (INCLUDE MARKS)	SNL	POS055
FRONT BODY (JACKET)	B16	ON SIDE PNL TO PRT W ZIP PRT 45 CM (R POCKET BAGS)	SNL	JFJ002
FRONT BODY (JACKET)	A17	OVERLOCK SIDE PANEL	OMS	SDO002
FRONT BODY (JACKET)	A18	ATT SHMP TO PRT 1A 2X (INCLUDE MARKS)	SNP	POA034
FRONT BODY (JACKET)	B19	TACK WELT POCKET 1 INCH 4X	BTK	POB003
FRONT BODY (JACKET)	B20	TACK PNL TO FR BODY STRAIGHT 50 CM	SNL	JAT001
FRONT BODY (JACKET)	B21	JOIN UPPER LOWER FRONT BODY	SNL	SOJ001A
FRONT BODY (JACKET)	B21	OVERLOCK LOWER FRONT BODY	OMS	SOO002A
BACK BODY (JACKET)	B1	ATT 2 STITCHES TO SHOULDER 25 CM	KNF	LSA011
BACK BODY (JACKET)	B2	STITCH PRT 2 STITCHES	STM	SOJ 001
SLEEVE	C1	JOIN DART 8 CM 2X	SNL	SOT001
SLEEVE	C2	CUFF	NMC	CUO001
SLEEVE	C3	JOIN ELASTIC 1 CM	SNL	CUJ003
SLEEVE	C4	JOIN LAYER CUFF 1 LAYER 18 CM	SNL	CUJ002
SLEEVE	C5	STITCH CLOSE CUFF FULL ELASTIC 25 CM	SNL	CU5001
HOOD	D1	JOIN SIDE TO MIDDLE HOODSHELL 100CM (THIN PADDING)	OMS	HOJ001
HOOD	D2	JOIN PANEL FRONT SIDE HOOD	OMS	SOJ002B
HOOD	D3	JOIN MIDDLE HOOD 88 CM	OMS	HOJ007
HOOD	D4	JOIN MIDDLE HOOD 88 CM	OMS	HOJ015
HOOD	D5	JOIN SIDE TO MIDDLE HOOD SHELL PADD 100CM (THIN PADD)	SNL	HOJ024
HOOD	D6	GL PNL MIDDLE HOOD 88 CM	OMS	HOO002
HOOD	D7	AS LN TO UP HOOD CRT 72 CM (P/W + PADD)	SNL	HOJ008
HOOD	D8	TACK NECK TAP HOOD 3 CM	SNL	HOJ001
CHIN GUARD	E1	JOIN INTERLIN CHIN GUARD 25 CM	SNL	FLJ010
CHIN GUARD	E2	CUT SEAM ALLOWANCE CHIN GUARD + TURN OUT	NMC	FLC002
CHIN GUARD	E3	JOIN CHIN GUARD TO INNER FR ZIPPER	SNL	ZPJ007
CHIN GUARD	E4	CUT TAPE LOOP	NMC	CUO001
CHIN GUARD	E5	INSERT PULLER + GASTACK	BTK	JAT004



Lampiran 2 Operational Process Chart Style Hooded Jacket (Lanjutan).

LINKING		F1	JOIN PINK LAYER FRONT DRESSING GUILT	SNL	JFJ005
LINKING	B2	F2	JOIN LOWER TO UPPER FRONT LINKING	SNL	SOJ0014
LINKING	B24	F3	OVERLOCK UPPER FRONT LINKING	OM3	SOO002A
LINKING	D4	F4	PREPARATION & STITCH COLLAR BACK BODY	AUTO	JDS001
LINKING	D6	F5	JOIN CLUSE FRONT BACK BODY WITH GUILT 24 CM	OM3	JEL004
LINKING	D8	F6	ATT 3/8" LABEL-HOOK TO COLLAR 19 CM	SNL	CDA001
LINKING		F7	STICK CARE LABEL 110 x 8 CM 2 LAYER	SNL	PWT002
LINKING		F8	ATT SAME LABEL TO SIDE SEAM 4 CM	SNL	JAJ009
LINKING	D9	F9	STICK CARE LABEL 110x8 CM	SNL	JLS006
LINKING	G10	F10	PREPARATIONS STICH GUILT SLV	AUTO	SLSD07
LINKING	O11	F11	JOIN PINK SLEEVE WITH GUILT 208 CM	OM3	SLJ003
LINKING	E12	F12	JOIN DART 8 CM X4	SNL	SOT001
LINKING		F13	JOIN PADDING TO PANEL UPPER SLV PADDING	OM3	HQJ018
LINKING	E14	F14	JOIN PADDING TO PANEL SHOULDER	OM3	HQJ007
LINKING		F15	JOIN SLV PADDING 184 CM (FRONT-REAR)	SNL	JAJ008
LINKING		F16	OVERLOCK ARMHOLE NORMAL HALF ROUNDED (SPECIAL)	OM3	JAG010
LINKING		F17	JOIN PINK 1 SHOULDER TO BACK LINKING	SNL	SOJ001
LINKING		F18	OVERLOCK PANEL SHOULDER	OM3	SOO002B
LINKING	E16	F19	JOIN SHOULDER LINKING	SNL	SOJ001
LINKING		F20	OVERLOCK SHOULDER	OM3	SOO002B
LINKING		F21	JOIN LOWER TO UPPER SEAM NORMAL	OM3	JAJ004
LINKING		F22	OVERLOCK LOWER SLV	OM3	JAO310
LINKING		F23	JOIN SEWING MATCH GUILT DOWN 108 CM	SNL	JAJ133
LINKING		F24	OVERLOCK SHOULDER 9 CM NORMAL	OM3	JAG007
ASSEMBLY	1	1	JOIN SLV PADDING 184 CM (FRONT-REAR)	OM3	JAJ005
ASSEMBLY	2	2	JOIN PANEL SHOULDER TO BACK BODY AT 18 CM SLV	OM3	SOJ002A
ASSEMBLY	3	3	JOIN SHOULDER	OM3	SOJ002A
ASSEMBLY	4	4	JOIN LOWER TO UPPER SLV AFTER IN SHOULDER	OM3	JAJ004
ASSEMBLY	5	5	JOIN EDGE SEAM PANEL 84 CM (WIDER)	OM3	JAJ008
ASSEMBLY	6	6	IN CUFF TO SLV FULL ELASTIC 34 CM	SNL	JAJ021
ASSEMBLY	7	7	IRON COLLAR 184 CM OR OVERLOCK BIAS COLLAR NORMAL	SNL	JAJ015
ASSEMBLY	8	8	ATT 3/8" LABEL TO COLLAR-GUILT 18 MATCH POINT 34 CM	NLJ01	JAG004R
ASSEMBLY	9	9	CUT ALL GARMENTS FRONT (SLEEVE 85 CM SNE)	SNL	JAC008
ASSEMBLY		10	JOIN FC TO HEM (SLEEVE) 110 CM	SNL	JAJ043
ASSEMBLY		11	OVERLOCK BIAS WAIST BAND 104 CM	OM3	JAJ006
ASSEMBLY		12	STICH FACING HEM STRAIGHT ROUNDED 118 CM	SNL	JAS008
ASSEMBLY		13	TACK END OF HEM 3 CM	SNL	JAJ007
ASSEMBLY		14	IN LINKING TO COLLAR (1 LAYER) 48 CM	SNL	JAJ027
ASSEMBLY		15	BRIDGE WINGS LOOP	BTK	PC0601
ASSEMBLY		16	JOIN TO FK ZIP 18 MATCH POINT 38 CM	SNL	JAJ020
ASSEMBLY		17	JOIN TO WIDE CUFF FULL ELASTIC 34 CM	SNL	JAJ032
ASSEMBLY		18	IRON BIAS COLLAR PAGED	SNL	JAJ104
ASSEMBLY		19	OVERLOCK BIAS COLLAR 48 CM	OM3	JAG003
ASSEMBLY		20	OVERLOCK BIAS CUFF 34 CM	OM3	JAG004
ASSEMBLY		21	TACK BIAS CUFF 4 CM	SNL	JAJ028
ASSEMBLY		22	TACK ARMHOLE 2 CM	SNL	JAJ010
ASSEMBLY		23	TACK BIAS SHOULDER 4 CM	SNL	JAJ024
ASSEMBLY		24	IRON THROUGH PINK ZIP	NWC	JAN001
ASSEMBLY		25	TACK FOLD FC HEM 80 CM X4	SNL	JAJ012
ASSEMBLY		26	HEM WITH LB CRV 418 CM PAGES	DNL	JAH009
ASSEMBLY		27	STICH CLOSE DRESS SLEEVE TO CM	SNL	JAG026
ASSEMBLY		28	ATT BRING UPPER FRONT 40 CM	SNL	JAJ010
ASSEMBLY		29	BACK BRING UPPER BODY	SNL	JAJ032
ASSEMBLY		30	STICH 14 RE ZIPPER NORMAL/DNL (SPECIAL) 78 CM	SNL	JAJ011

Lampiran 2 *Operational Process Chart Style Hooded Jacket (Lanjutan).*

31	BARTACK FRONT ZIPPER X4 1 2	BTK	JAB003
32	CUT TAPE PULLER 1 2	NMC	CUC001
33	INSERT PULLER + BARTACK 1 1	BTK	JAI006
	1		
	1		
	1		
#N/A	CUTTING NORMAL JACKET W LINING 1	STM	JNC001
#N/A	INSPECTION NRML JKT 1	QC	QCJKT
#N/A	STEAM NRML JKT 1	STM	JAF001
#N/A	PACKING PADDED JACKET 1	STM	JPP002

### Lampiran 3 Hasil Pengujian

Test Standard Name	Minimum Requirements Underlined requirements are mandatory on material level	Test Results	Test Details	A	B
Dimensional Change	See Test Method	1.8	(N) Length		
Sparsity	(X) Wash	4.7	(N) Wash		
Appearance Change After Laundering	Sparsity	3.3	(N) Sparsity		
SPC (K) ref. only 40°C	Appearance: No Change	PASS	pass/fail		
SPC (L)	color change of $\pm 4.5$	4.5	open/c		
Repeat Tests at Various Appropriate Test Temperatures	See Test Method	3.3	(N) Length		
	(X) No Washes	9.5	(N) Wash		
	(X) 10 Washes				
	(X) 15 Washes	6.9	(N) Sparsity		
	Appearance: No Change	PASS	pass/fail		
	color change of $\pm 4.5$	4.5	open/c		
					X
Flammability	Class 1, no internal flammability				
Heat Shrinkage	Shrinkage: 12% Color Change: 0 Appearance: Afterwards, No Change		(N) Length (N) Wash pass/fail		
Wash Process: (20°C, 40°C, 60°C, 70°C, 95°C) Soaking: (30°C, 40°C, 60°C, 70°C, 95°C) Machine Wash: (30°C, 40°C, 60°C, 70°C, 95°C) Repeat Tests at Various Appropriate Test Temperatures					
Random Tumble Piling	Not Allowed		open/close		
* only for back, collar, cuffs, french cuffs	See Test Method: ISO 15457-2:2011, Part 2.3		open/close		
Bursting strength	Natural (50%): 237 g/cm <sup>2</sup> or above $\pm 10$ g/cm <sup>2</sup> 237 g/cm <sup>2</sup> or above $\pm 10$ g/cm <sup>2</sup> Soakwater: 140% 237 g/cm <sup>2</sup> or above $\pm 10$ g/cm <sup>2</sup> 237 g/cm <sup>2</sup> or above $\pm 10$ g/cm <sup>2</sup> Tensile: $\geq 4500$ N		(M)N		
* only for all printed fabrics and printed fabrics with laser cut details/holes					
Tensile strength	Woven (50%): 100N Knitted (50%): 100N Tensile: 100N Tensile: over 4000 (ref) = 4000N * Spun: 100N minimum * Natural (50%): 100N/100N		(M)ref (M)ref		5
Seam Strength	Woven (50%): 140N Knitted (50%): 140N/140N Tensile: 140N * Natural (50%): 140N/140N		(M)Pass (M)Pass		5